

RMS&') \$ - 2U Industrial Rackmount Computer System

Specifications

Material of Chassis

Standard Color

Front DUBs

Front Panel Connector

Indicators

Handles

Front Panel Controls

Cooling Fan

System Board Size

Drive Bays

Expansion Slots

Power Supply

Net Weight

Dimension (W x H x D)

Operation Temperature

Non-Operating Temperature

Operating Relative Humidity

Non-Operating Relative Humidity

Chassis Features

1.2mm ~ 2.0mm SECC Main Sheet Metal

Black/Silver

Power Button, Reset Button

2 x USB 2.0 Ports (USB 3.0 as Option)

LEDs for Power ON/OFF, HDD, Fan & Alarm

Durable strength aluminum alloy die-casting handles

Power ON/OFF, System Reset

2 x 80mm Rear Exhaust Silent Fans

ATX(12" x 9.6"), MicroATX(9.6" x 9.6"), Mini-ITX(6.7" x 6.7")

2 x 3.5" Drive Bays

4 x 2.5" Drive Bays

7 x Low Profile Slots

1U Flex PFC 110/220 VAC Power Supply

TBD

19 x 3.5 x 13.78 Inch

Environmental

50° to 95°F (Regular Motherboard)

32° to 140°F (Industrial Motherboard)

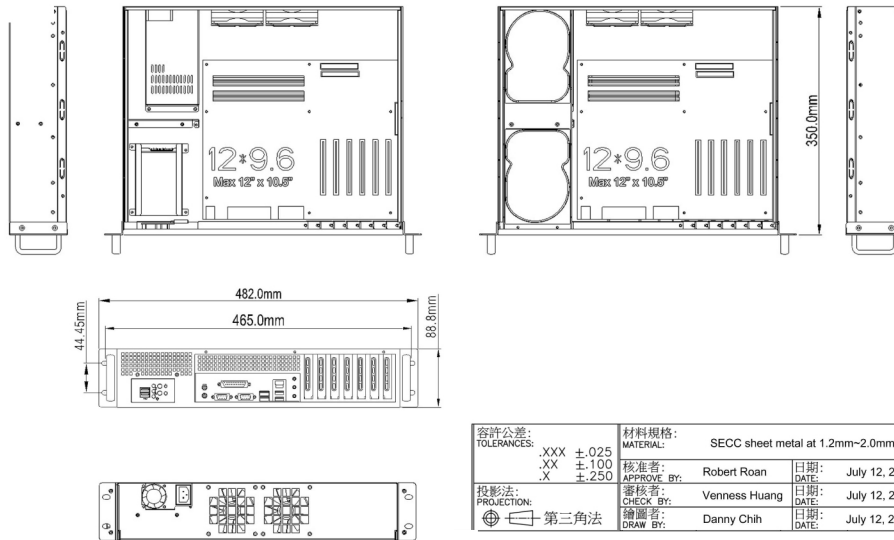
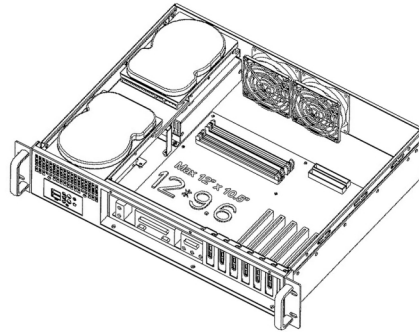
-40° to 158°F

8% to 90% (non-condensing)

5% to 95% (non-condensing)



RMS2350 - 2U Industrial Rackmount Computer System Mechanical Drawing



容許公差: TOLERANCES:	.XXX ±.025 .XX ±.100 .X ±.250	材料規格: MATERIAL:	SECC sheet metal at 1.2mm-2.0mm
投影法: PROJECTION:	第三角法	核准者: APPROVE BY:	Robert Roan
		審核者: CHECK BY:	Venness Huang
		繪圖者: DRAW BY:	Danny Chih
		日期: DATE:	July 12, 2019
		日期: DATE:	July 12, 2019
		日期: DATE:	July 12, 2019