

Rextorm

PX - 501

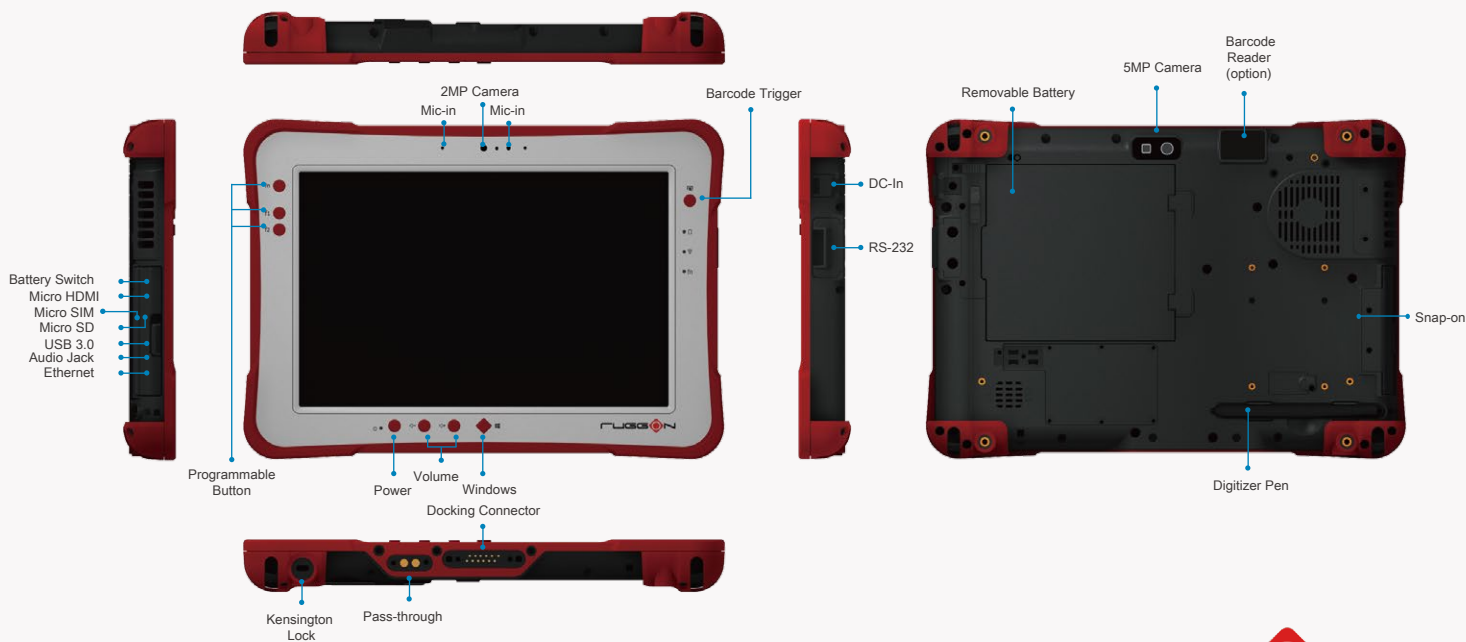
10.1" Fully Rugged Windows Tablet

Extreme Power
with
Extensibility



- ◆ 4th generation Intel® Core™ i5 processor 4300U
- ◆ IP65, MIL-STD-810G, 5 feet drop resistance
- ◆ 1000 nits sunlight readable display
- ◆ Capacitive multi-touch supports glove touch, water rejection, palm rejection, 2mm hard tip stylus
- ◆ Optional Janus USB Ignition Key, Phoenix SecureWipe
- ◆ GNSS, Wi-Fi, Bluetooth, optional 4G LTE
- ◆ Hot swappable battery design
- ◆ Wide expansion design for data capture
- ◆ Dual pass-through connector for WLAN, GNSS, WWAN

I/O Diagram



Specifications

Operating System

- Windows 10 IoT Enterprise 2015 LTSB
- Windows Embedded 8.1 Industry 64-bit
- Windows Embedded Standard 8 64-bit
- Windows 7 Professional 64-bit
- Windows Embedded Standard 7 64-bit

CPU

- 4th generation Intel® Core™ i5 processor 4300U
vPro™* 1.9 GHz * vPro™ by request

Memory

- 4GB DDR3L (8GB by request)

Storage

- 128GB mSATA SSD (optional 256GB)

Display

- 10.1-inch 1920 x 1200 WUXGA; 1000 nits sunlight readable
- 10-point capacitive touch supports glove touch, water rejection, palm rejection, 2mm hard tip stylus
- Gorilla Glass3 ■ Digitizer by request

Communications

- Wi-Fi 802.11 a/b/g/n/ac ■ Bluetooth V4.0
- Optional 4G LTE ■ GNSS(GPS/Glonass/BeiDou)

Camera

- 2MP front camera
- 5MP rear camera, AF with LED flash

Expansion

- Optional built-in 2D barcode reader
- Optional NFC + Smart card reader-CAC 2-in-1 module

Security

- Optional Janus USB Ignition Key, Phoenix SecureWipe
- TPM 1.2

Control Button

- Programmable button x 3 ■ Barcode trigger x 1
- Power, volume, Windows button

LED Indicator

- Power on/off ■ Wi-Fi on/off ■ Fn on/off
- Battery full/charging/low

Sensor

- Gyroscope, G-sensor, E-compass, light sensor

Power Adapter

- AC 100V~240V, 50~60Hz Input; 19VDC@3.42A, 65W

Battery

- Standard : 4500mAh, 10.8V, hot swappable battery
Battery operation* : 6 hours
- Extended : 9000mAh, 10.8V, hot swappable battery (option)
Battery operation* : 11 hours

*The listed battery life is based on MobileMark 2012[®] media mode testing.

I/O Interface

- USB 3.0 type A x 1
- Gigabit ethernet (RJ-45) x 1
- RS-232 (optional for USB 2.0 type A)
- Audio jack (headphone/microphone combo) x 1
- RF pass-through connector x 2 for WLAN,GNSS, WWAN
- 12-pin docking connector x 1
- Micro SD slot x 1, Micro SIM slot x 1, Micro HDMI x 1
- Speaker & microphone

Dimensions and Weight

- 28 x 19.5 x 2.3 cm (11" x 7.7" x 0.9") ■ 1.36 kg (3.0 lbs)

Rugged Features

- IP65, MIL-STD-810G, shock & vibration, 5 feet drop

Environment

- Operating temperature -20°C to 60°C
- Storage temperature -30°C to +70°C
- Humidity 5%~95%

Certification

- CE, FCC, CB

Software

- DashON

In-box Accessories

- Pen ■ Hand strap ■ Shoulder strap
- Handle ■ Power adapter

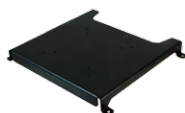
Accessories



Vehicle Dock



Desktop Dock



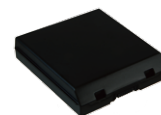
VESA Mount
Bracket



NFC + Smart Card
Reader(CAC)



2-bay
Battery Charger



Long Life
Battery Pack