

PICO500

Pico-ITX SBC with 6th Gen Intel® Core™ i7/i5/i3 & Celeron® Processors, HDMI/LVDS, LAN and Audio

Features

- 6th gen Intel® Core™ i7/i5/i3 & Celeron® processors (Skylake)
- 1 DDR4 SO-DIMM, up to 16GB
- 1 USB 2.0 and 1 Gigabit LAN ports
- PCI Express Mini Card with mSATA supported
- Intel® AMT 11 supported
- AXView 2.0 intelligent remote management software



Core System

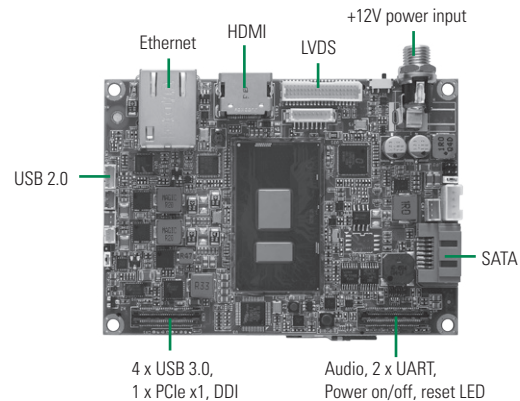
CPU	6th generation Intel® Core™ i7/i5/i3 & Celeron® processors onboard (Skylake)
System Memory	1 x 260-pin DDR4-2133 SO-DIMM. up to 16GB
Chipset	SoC Integrated
BIOS	AMI
SSD	N/A
Watchdog Timer	255 levels, 1~255 sec.
Expansion Interface	1 x Full-size PCI Express Mini Card with mSATA 1 x PCIe x1, 2 x UART, 1 x DDI, 4 x USB 3.0, and 1 x HD audio (through expansion connector)
Battery Lithium	Lithium 3V/220mAh
Power Input	DC power jack connector +12V DC-in only AT Auto Power On function supported
Power Requirements	Intel® Core™ i7-6600U @ 2.6 GHz, 16GB DDR4 Max. RMS: +12V @ 2.3A Intel® Core™ i5-6300U @ 2.4 GHz, 16GB DDR4 Max. RMS: +12V @ 2.2A Intel® Core™ i3-6100U @ 2.3 GHz, 16GB DDR4 Max. RMS: +12V @ 1.9A Intel® Celeron® 3955U @ 2 GHz, 16GB DDR4 Max. RMS: +12V @ 1.7A
Size	100 x 72 mm
Board Thickness	1.6 mm
Temperature	-20°C ~ +70°C (-4°F ~ 158°F), operation
Relative Humidity	10% ~ 95% relative humidity, non-condensing

I/O

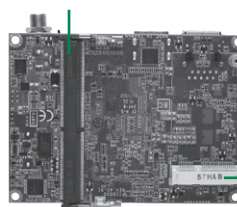
MIO	N/A
SATA	1 x SATA-600
Hardware Monitoring	Detect CPU/system temperature and voltage
Ethernet	1 port 10/100/1000 Mbps supports Wake-on-LAN, PXE Boot ROM with Intel® i219LM
Audio	HD Codec audio as Mic-in/Line-out with Realtek ALC662
USB	1 x USB 2.0
SMBus	System Management Bus for advanced monitoring/control
Digital I/O	N/A

Display

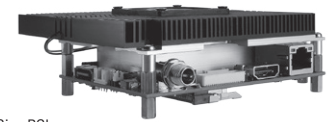
Chipset	Intel® HD graphics
Memory Size	Share system memory
Display Interface	1 x LVDS; 18/24-bit single/dual channel 1 x HDMI



DDR4 SO-DIMM



▲ Rear view



▲ Assembly view

Full-Size PCI Express Mini Card with mSATA supported

Packing List

Standard

Quick installation guide, user's manual/utility CD and accessories

Accessories

Part Number	Description	Qty
59403208000E	SATA cable	1
594P8800600E	SATA power cable	1
594P8802800E	USB cable	1
59190400500E	Fan cable	1
5078H500100E	Heatsink with fan	1
5078H500000E	Heatspreader	1

Ordering Information

Standard

PICO500HGA-i7-6600U (P/N: E38H500102)	Pico-ITX SBC with Intel® Core™ i7-6600U (2.6-3.4 GHz, 4 MB cache, 15W), HDMI/LVDS, 1 GbE LAN and 1 USB 2.0
PICO500HGA-i5-6300U (P/N: E38H500103)	Pico-ITX SBC with Intel® Core™ i5-6300U (2.4-3 GHz, 3 MB cache, 15W), HDMI/LVDS, 1 GbE LAN and 1 USB 2.0
PICO500HGA-i3-6100U (P/N: E38H500101)	Pico-ITX SBC with Intel® Core™ i3-6100U (2.3 GHz, 3 MB cache, 15W), HDMI/LVDS, 1 GbE LAN and 1 USB 2.0
PICO500HGA-Celeron® 3955U (P/N: E38H500100)	Pico-ITX SBC with Intel® Celeron® 3955U (2 GHz, 2 MB cache, 15W), HDMI/LVDS, 1 GbE LAN and 1 USB 2.0

Optional

AX93275 (P/N: E393275102)	I/O board for 1 x RS-232/422/485, 1 x RS-232, 4 x USB 3.0, 1 x VGA, 1 x Audio
AX93276 (P/N: E393276102)	I/O board for 1 x RS-232/422/485, 1 x RS-232, 4 x USB 3.0, 1 x HDMI, 1 x Gigabit LAN
AX93292 (P/N: E393292100)	I/O board for 1 x RS-232/422/485, 1 x RS-232, 4 x USB 2.0, 1 x Audio
AX93299 (P/N: E393299100)	I/O board for 1 x RS-232/422/485, 1 x RS-232, 4 x USB 3.0, 1 x Audio