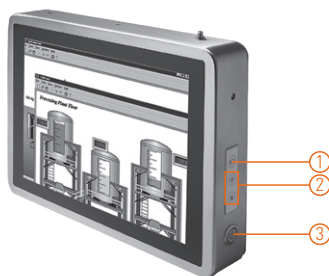
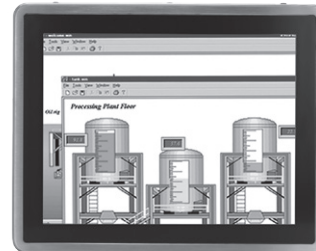


GOT812L(H)-880 NEW

12.1" XGA TFT IP66 & IP69K-rated Stainless Steel Fanless PCT (or Resistive Touch) Panel Computer with Intel® Core™ i5 Processor and Flat Bezel Design (-20°C to +50°C)

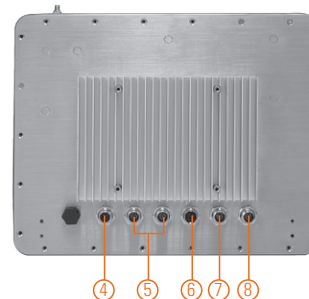
Features

- 12.1" XGA TFT flat bezel LCD display
- Sunlight readable solution with 800 nits
- IP66/IP69K-rated (NEMA 4X) water/dust/corrosion-proof design
- Full stainless steel enclosure with type 316
- -20°C to +50°C wide operating temperature range
- Fanless design with Intel® Core™ i5 processor
- Wireless network connectivity
- 9 ~ 36 VDC wide range power input
- M12 type connectors for harsh environments

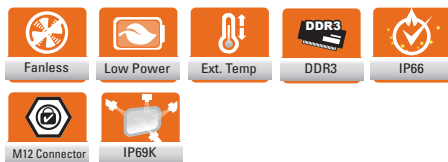


▲ Side view

1. Backlight ON/OFF
2. Brightness Adjust +/-
3. Power ON/OFF



4. DC power connector
5. USB 2.0 x 4
6. Ethernet
7. COM 1 (RS-232/RS-422/RS-485; Default: RS-232)
8. COM 2 (RS-232)



Introduction

The 12-inch GOT812 is specially designed for food processing applications. Its IP66-rated stainless steel housing protects entire system from damage of water, powder and dust. It also supports a wide operating temperature range from -20°C to +50°C. Thus, this robust unit is best suited for extreme humidity, dusty or wet spaces in food factories or kitchens and more harsh applications.

Sunlight Readable Design

The GOT812H-880 features sunlight readable technology with LED tech high brightness 800 nits color display and low reflective touchscreen allows the screen legible even under strong sunlight.

Full IP66 and IP69K Certified

The GOT812 adopts a water/dust-proof housing design with five IP66-rated connectors, M12 I/O connectors and IP69K that ensures the product's ability to resist ingress of high temperature and high pressure water. It passed entire system IP66 test by SGS and verified salt mist test. Additionally, it was tested by a spray nozzle with high temperature water (+80°C), a flow rate of 14 ~ 16 L/min and a nozzle hold with distance 10 ~ 15 cm away from the device at angles of 0°, 30°, 60° and 90° for 30 seconds. The GOT812 is qualified to meet harsh environment applications.

Wide Temp. (-20°C to +50°C) & Anti-vibration (2G) Design

The GOT812 featuring fanless and noiseless design supports a wide operating temperature range from -20°C to +50°C. Besides, the patent of anti-vibration for SSD ensures system reliability and stability.

Specifications

Enclosure	Stainless type 316	
LCD Panel	Display Type	12.1" XGA TFT LCD
	Brightness (cd/m ²)	800 nits LCD (GOT812H-880) 500 nits LCD (GOT812L-880)
	Resolution	1024 x 768
	Viewing Angle (H/V)	160°/160°
Main System	CPU	Intel® Core™ i5 4300U 1.9 GHz (Haswell ULT)
	Chipset	SoC Integrated
	System Memory	1 x 204-pin DDR3L-1600 SO-DIMM, up to 8GB
	BIOS	AMI with Axiomtek standard features; such as, SmartView, Ethernet Boot ROM (RPL & PXE), customer CMOS backup
	Storage	1 x 2.5" SSD
	Watchdog Timer	255 levels, 1 ~ 255 sec.
	Onboard Graphics	Integrated in Intel® GFX

Specifications

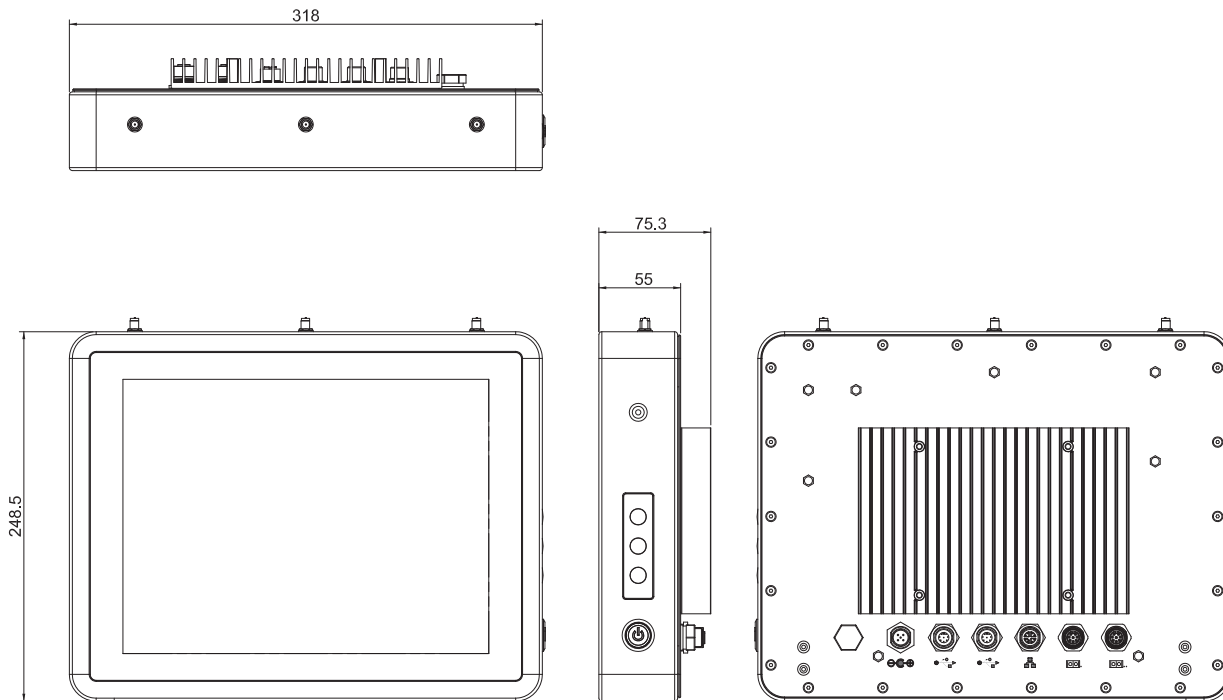
I/O Connector	2 x RS-232/422/485 (default RS-232, A-coded) 4 x USB 2.0 (A-coded) 1 x 10/100/1000 Mbps Ethernet (Intel® i218LM; X-coded)
Expansion Interface	2 x PCI Express Mini Card slot
Touchscreen	5-wire resistive touch or projected capacitive multi-touch
Power Supply	Power input 9 ~ 36 VDC
Power Consumption	56 W
Dimensions	318 mm (12.52") (W) x 248.5 mm (9.78") (D) x 75.3 mm (2.96") (H)
Packing Dimensions	510 mm (20.07") (W) x 186 mm (7.32") (D) x 532 mm (20.94") (H)
Weight (net/gross)	4.27 kg (9.41 lb)/5.77 kg (12.72 lb)
Environment	Operating temperature: -20°C ~ +50°C (-4°F ~ +122°F) Relative humidity: 10% ~ 95% @ 40°C, non-condensing Operation vibration: 2G, 5 ~ 500Hz, random for 2.5" SSD
Certificate	CE

* W.T.: Wide Temperature. All W.T. supported products have to be sorted by Axiomtek.

Optional Accessories

594B8122100E	Water-proof COM cable (1.8 m)
594B8152710E	Water-proof LAN cable (1.8 m)
50966D45010E	Adapter 24V 120W. M12 A-code 5P. LTE120ES
594B8122820E	Water-proof USB cable (1.8 m)
822B8120070E	GOT812 keyboard bracket (w/o keyboard)

Dimensions



Ordering Information

GOT812L-880-C-DC	12.1" XGA fanless IP66 & IP69K-rated stainless steel touch panel computer with Intel® Core™ i5 4300U, projected capacitive touch screen, 500 nits LCD and 9 ~ 36 VDC power input
GOT812L-880-C-RF-DC	12.1" XGA fanless IP66 & IP69K-rated stainless steel touch panel computer with Intel® Core™ i5 4300U, projected capacitive touch screen, 500 nits LCD, 9 ~ 36 VDC power input and Wi-Fi or 3G
GOT812H-880-R-DC	12.1" XGA fanless IP66 & IP69K-rated stainless steel touch panel computer with Intel® Core™ i5 4300U, 5-wire flat resistive touch screen, 800 nits LCD and 9 ~ 36 VDC power input
GOT812H-880-R-RF-DC	12.1" XGA fanless IP66 & IP69K-rated stainless steel touch panel computer with Intel® Core™ i5 4300U, 5-wire flat resistive touch screen, 800 nits LCD, 9 ~ 36 VDC power input and Wi-Fi or 3G

*Specifications and certifications may vary according to various options.

Optional EOS Installation

WES 7
WES 8
Windows® 10 IoT

Optional OS Installation

Windows® 7
Windows® 8/8.1
Windows® 10