

# P61910 NEW

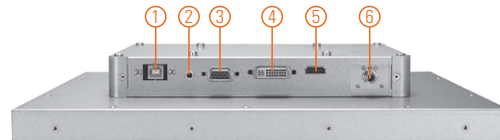
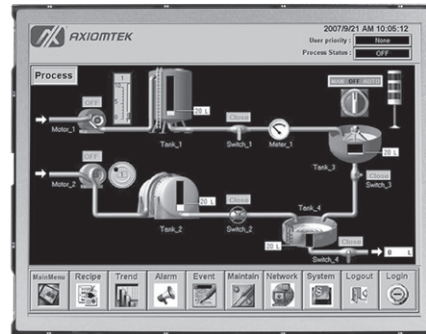
19" SXGA TFT Industrial Open Frame Monitor

## Features

- 19" SXGA TFT LED backlight LCD
- Supports open frame mount, wall mount and VESA arm
- Resistive touchscreen
- Supports full range screw-type (locked) AC-in or 12 V/24 V DC-in (option)
- VGA, HDMI and DVI-D with multi-signal inputs



▲ Side view



- |             |          |
|-------------|----------|
| 1. T/S port | 5. HDMI  |
| 2. Line-in  | 6. Power |
| 3. VGA      |          |
| 4. DVI-D    |          |

## Introduction

The P61910 is an ultra slim industrial open frame monitor, which adopts 19-inch 350 nits SXGA LED backlight LCD display and supports multi-signal interfaces including DVI, VGA and HDMI. 12/24V DC-in means it is fit for all kinds of industrial environments. Moreover, the P61910 supports open frame mount, wall mount or VESA FPMPMI mounting. With the compact mechanism design, users can enjoy free from space constraint. It is especially suitable for POI/POS, excellent HMI and all kinds of heavy-duty industrial fields.

## Specifications

Front Bezel	Open frame monitor	
Mounting	Open frame mount, wall mount and VESA arm	
LCD Panel	Display	19" SXGA TFT LCD
	Max. Resolution	1280 x 1024
	Max. Colors	16.7 M
	Active Area (mm)	376.32 x 301.06
	Pixel Pitch (mm)	0.294 x 0.294
	Response Time	5ms
	Backlight	LED backlight
	Backlight MTBF	50,000 hrs
	Viewing Angle (H/V)	170°/160°
	Contrast Ratio	1000 (TYP.)
Brightness (cd/m <sup>2</sup> )	250 nits	
Display Control	OSD (on screen display)	
Display Mode	VGA 640 x 350 (70Hz), VGA 640 x 480 (60/72/75Hz), VGA 720 x 400 (70Hz), SVGA 800 x 600 (60/72/75Hz), XGA 1024 x 768 (60/72/75Hz), SXGA 1280 x 1024 (60/72/75Hz)	

## Specifications

Input Signal	DVI-D VGA HDMI Touchscreen: Serial RS-232 or USB interface
I/O Connectors	1 x RS-232 or USB for touchscreen version 1 x DVI-D 1 x VGA 1 x HDMI 1 x Screw-type DC power input
Power Adapter	Screw-type external AC/DC power adapter
Power Consumption	17 W
Touchscreen	Thickness Resistive: 3.2 mm
	Light Transmission Resistive: 80%
	Power Consumption Resistive: +5V @ 100mA
	Touch Life Resistive: 35 million touches Controller interface: RS-232 D-type 9-pin male connector or USB
Dimensions	404.5 mm (15.93") (W) x 31.9 mm (1.26") (D) x 332 mm (13.07") (H)
Packing Dimensions	595 mm (23.43") (W) x 230 mm (9.06") (D) x 555 mm (21.85") (H)
Weight (net/gross)	TBD
Environment	Operating temperature: 0°C ~ +45°C (+32°F ~ +113°F) Relative humidity: 20% ~ 90% @ +40°C, non-condensing
Packing List	1x VGA cable 1x RS-232 or USB cable for touchscreen (for touch version) 1x Audio cable 1x EU/US power cord (for AC version)
Certificate	CE

## Ordering Information

AC Power	Resistive (RS-232)	P61910R-AC-RS-US-EU
	Resistive (USB)	P61910R-AC-U-US-EU
	Non-touch	P61910N-AC-US-EU
12V/24VDC Power	Resistive (RS-232)	P61910R-DC-RS
	Resistive (USB)	P61910R-DC-U
	Non-touch	P61910N-DC

## Optional Accessories

5946L203800E	HDMI cable
59461713400E	DVI cable
82231770050E	Wall mount kit
E226171106	Desktop stand

## Dimensions

