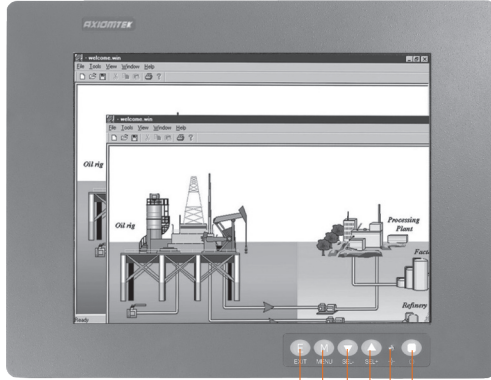
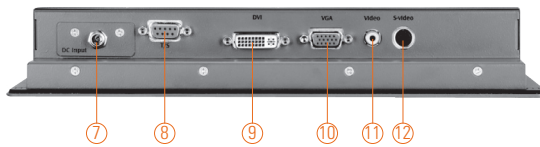


P6100

10.4" SVGA TFT Industrial LCD Monitor



1. Exit
2. Menu
3. SEL-
4. SEL+
5. Power LED
6. Power switch



- | | |
|-------------------------|------------------|
| 7. DC power input | 10. VGA |
| 8. T/S port | 11. Video (CVBS) |
| 9. DVI (Only for DVI-D) | 12. S-video |

Features

- 10.4" TFT 230 nits SVGA LCD
- NEMA 4/12 (IP65)- compliant panel mounting flat panel monitor
- Resistive touchscreen
- Supports full range screw-type (locked) AC-in or 24V DC-in (option)
- Supports multi-signal inputs: VGA, S-video, Video and DVI-D
- Supports panel mount, wall mount and VESA arm



▲ Side view

Introduction

The P6100 is a slim & compact industrial LCD monitor equipped with 10.4-inch 230 nits brightness SVGA LCD display and supports multi-signal interfaces including DVI-D, VGA, S-Video, and video. Featuring NEMA 4/12 & IP65 compliant front bezel, screw-type adaptor plug design, and 12/24V DC-In means it is fit for all kinds of industrial environments. Moreover, the P6100 supports panel mount, wall mount or VESA FPMPI (Video Electronics Standards Association Flat Panel Monitor Physical Mounting Interface) mounting. With the compact mechanism design, users can enjoy free from space constraint. This compact size industrial-grade flat panel monitor is ideal for varied industrial or commercial projects, such as transportation, POI, HMI, and even rugged environments.

Specifications

Front Bezel	NEMA 4/12 (IP65)-compliant, metal front bezel	
Mounting	Panel mounting, wall mounting or VESA FPMPI mounting (video electronics standards association flat panel monitor physical mounting interface)	
LCD Panel	Display Type	10.4" TFT SVGA LCD
	Max. Resolution	800 x 600
	Max. Colors	16.2M/262k
	Active Area (mm)	211.2 x 158.4
	Pixel Pitch (mm)	0.264 x 0.264
	Response Time	35ms
	Backlight	LED
	Backlight MTBF	30,000 hrs
	Viewing Angle(H/V)	160°/130°
	Contrast Ratio	500 (TYP)
	Brightness (cd/m ²)	230 nits
Display Control	OSD (on screen display)	
Display Mode	VGA 640 x 480 (60/72Hz)	
	SVGA 800 x 600 (60/72Hz)	



Specifications

Input Signal	VGA Video: R.G.B Analog 0.7v Peak-to-Peak DVI (Only for DVI-D) Touchscreen: Serial RS-232 or USB interface Video (optional) S-video (optional)
I/O Connectors	1 x RS-232 or USB touchscreen version 1 x VGA input 1 x DVI (Only for DVI-D) 1 x Screw-type DC power input 1 x RCA for video (optional) 1 x S-video for video (optional)
Power Adapter	Screw-type external AC / DC power adapter
Touchscreen	Thickness Resistive: 2.2 mm Light Transmission Resistive: 80% Power Consumption Resistive: +5V @ 100mA Touch Life Resistive: 35million touches Controller interface: RS-232 or USB D-type 9-pin male connector or USB connector
Dimensions	294.2 mm (11.58") (W) x 46.6 mm (1.83") (D) x 231.2 mm (9.1") (H)
Packing Dimensions	380 mm (14.96") (W) x 190 mm (7.48") (D) x 430 mm (16.93") (H)
Weight (net/gross)	2.6 kg (5.73 lb)/5.1 kg (11.24 lb)
Environment	Operating temperature: -10°C ~ +60°C (+14°F ~ +140°F) Storage temperature: -30°C ~ +80°C (-22°F ~ +176°F) Relative humidity: 20%~90%@40°C, non-condensing
Certificate	CE



▲ Stand kit

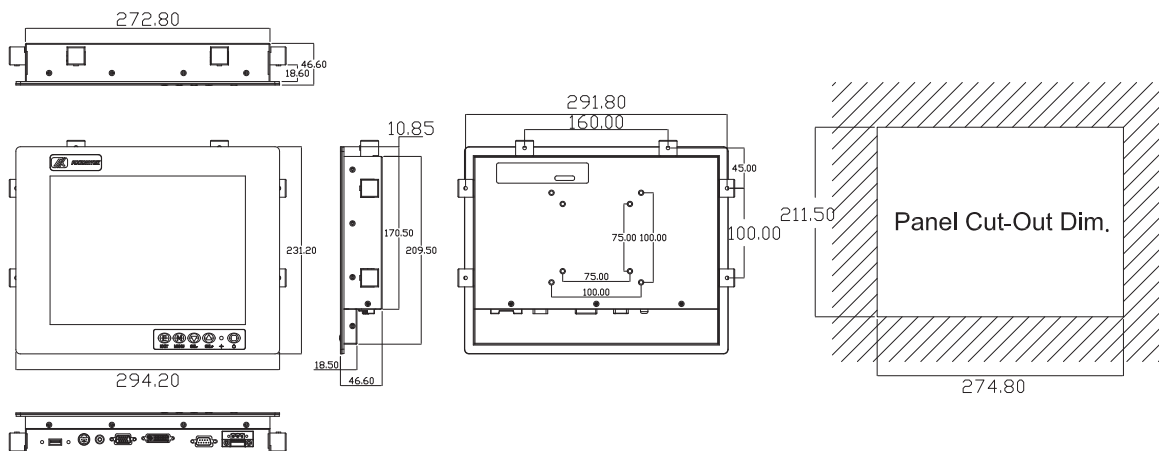


▲ Various mounting ways:
panel/wall/VESA



▲ Phoenix-type power input

Dimensions



Ordering Information

P6100		
AC Power	Panel Mount Monitor	
	Resistive	P6100PR-AC-RS-V3-RC-US-EU
	Resistive (USB)	P6100PR-AC-U-V3-RC-US-EU
	Glass	P6100PG-AC-V3-RC-US-EU
24VDC Power	Panel Mount Monitor	
	Resistive	P6100PR-24VDC-RS-V3-RC
	Resistive (USB)	P6100PR-24VDC-U-V3-RC
	Glass	P6100PG-24VDC-V3-RC
P6100L		
AC Power	Panel Mount Monitor	
	Resistive (RS-232)	P6100LPR-AC-RS-V3-RC-US-EU
	Resistive (USB)	P6100LPR-AC-U-V3-RC-US-EU
	Glass	P6100LPG-AC-V3-RC-US-EU
24VDC Power	Panel Mount Monitor	
	Resistive	P6100LPR-24V-DC-RS-V3-RC
	Resistive (USB)	P6100LPR-24V-DC-U-V3-RC
	Glass	P6100LPG-24V-DC-V3-RC

* Specification and certifications are based on options and may vary.

Optional Accessories

ARM-VM-101	VESA ARM (clamp type)
ARM-VM-105	VESA ARM (wall mount type)
Wall mounting & desktop stand	

Overview

Fanless
Touch Panel
Computers

Heavy-duty
Fanless Touch
Panel Computers

Industrial
Touch Panel
Computers

Industrial Touch
panel Monitors

Infotainment
Touch Panel
Computers

Healthcare
& Medical
Solutions

Open
Frame Panel
Computers

Accessories

